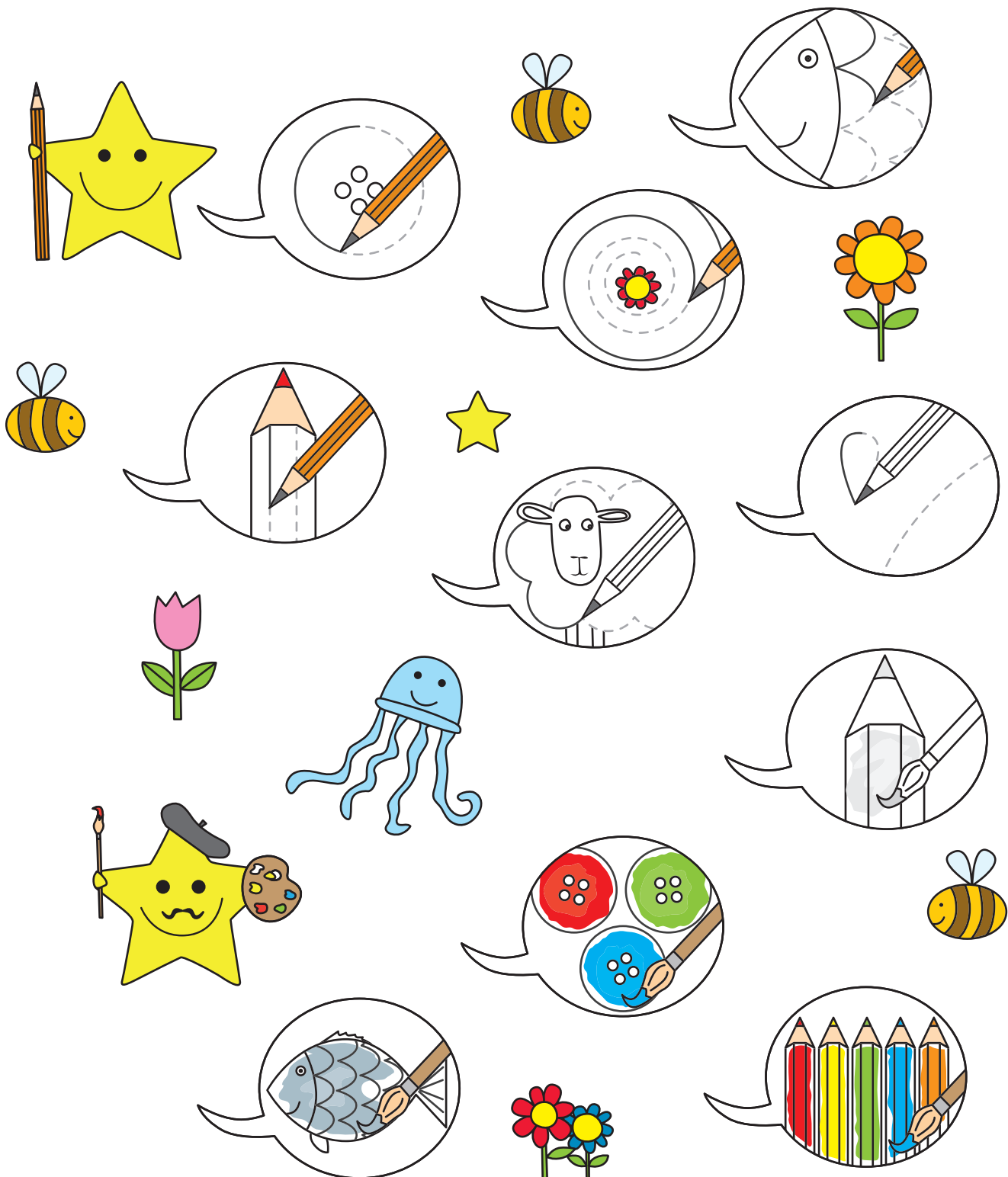
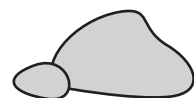
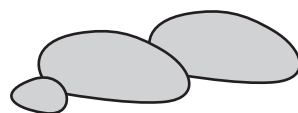
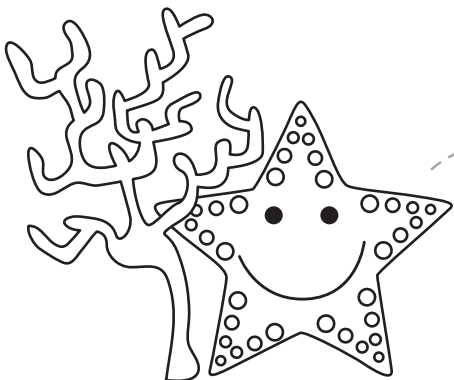
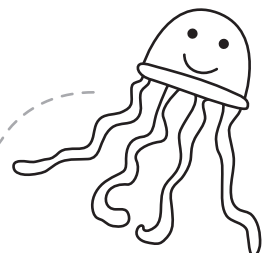
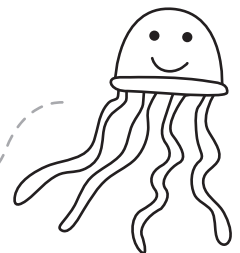
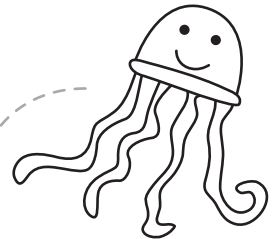
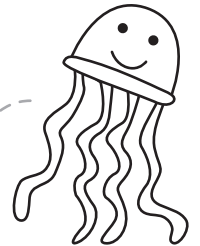
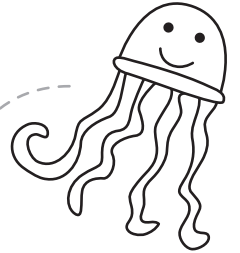
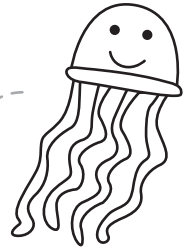


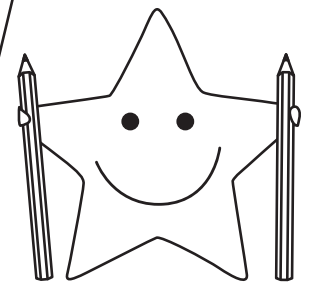
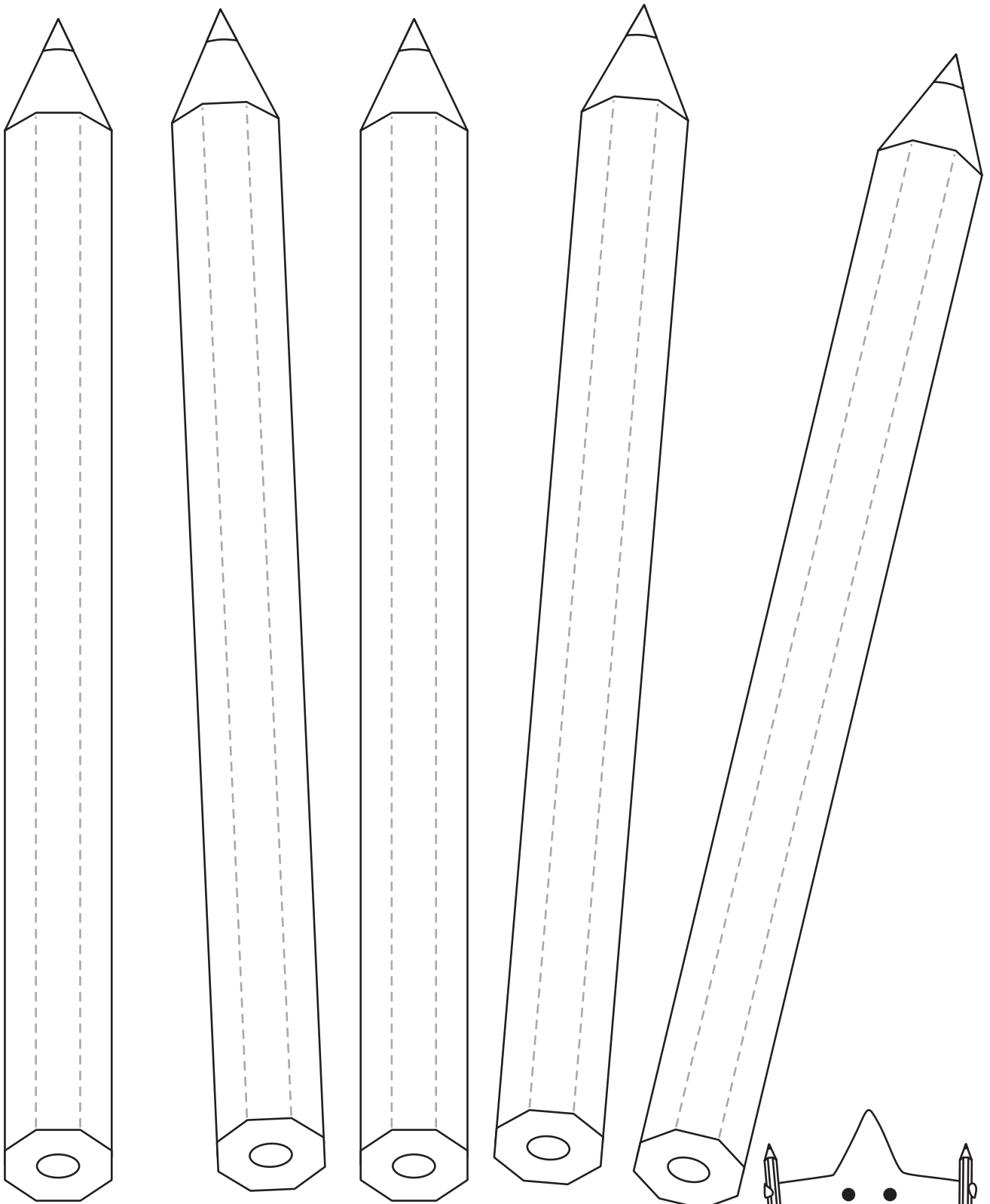


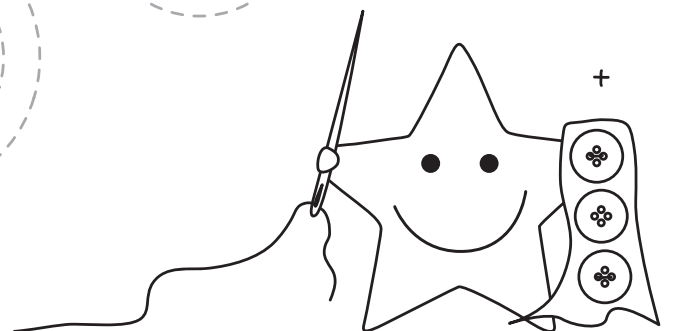
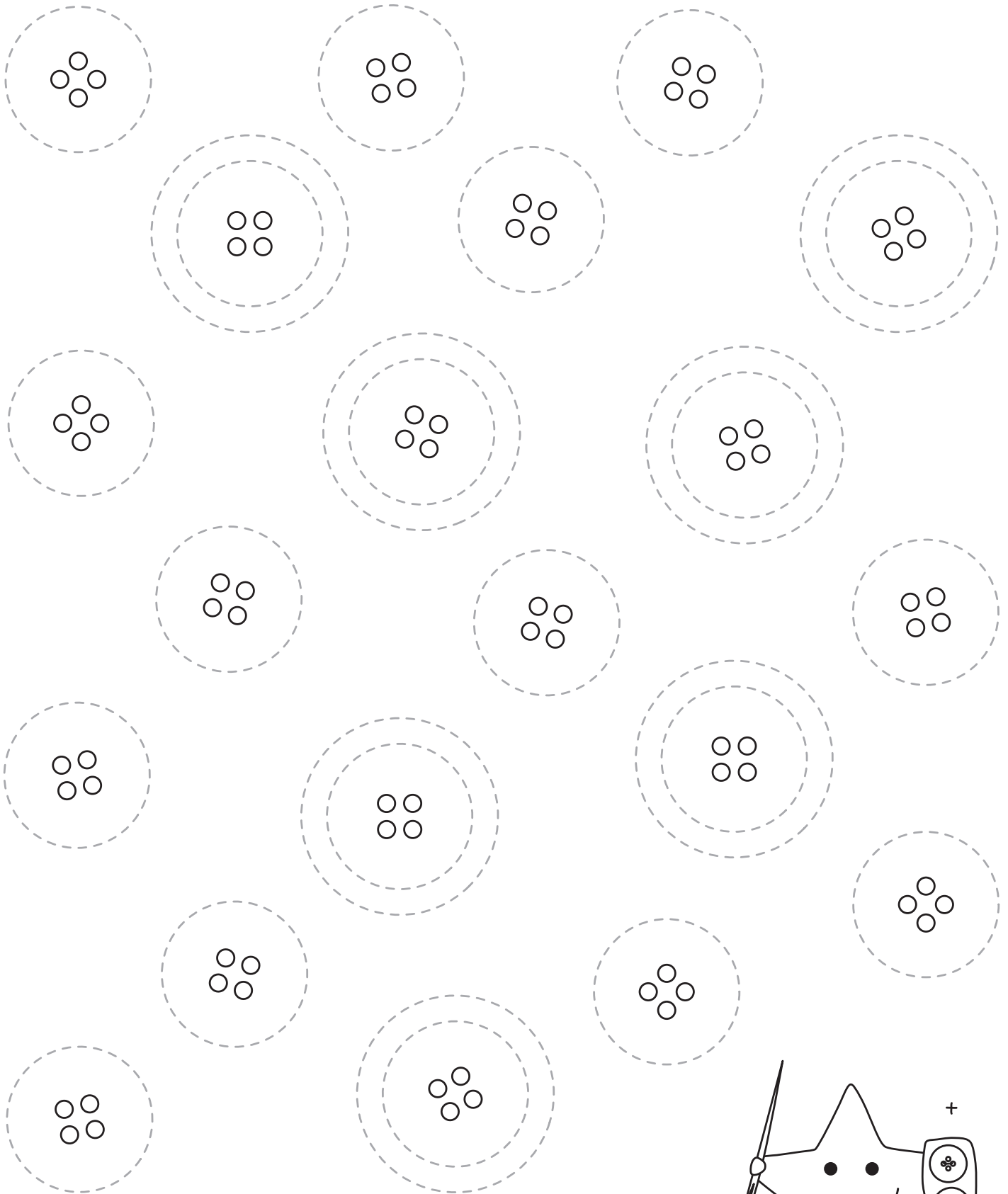
PRACOVNÍ LISTY:

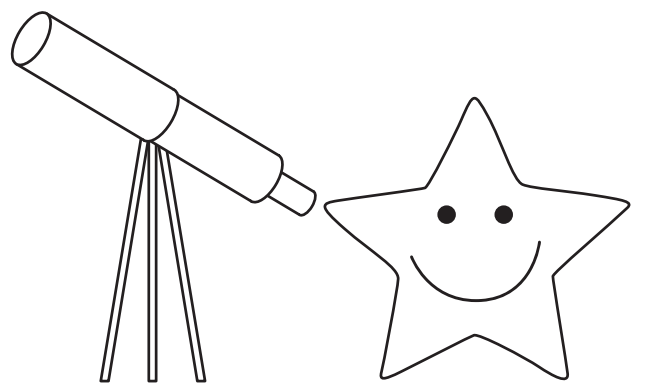
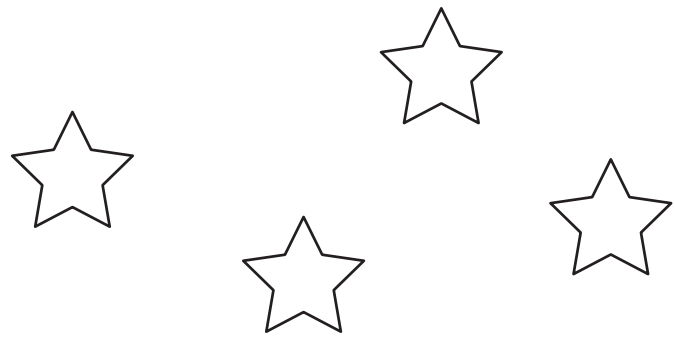
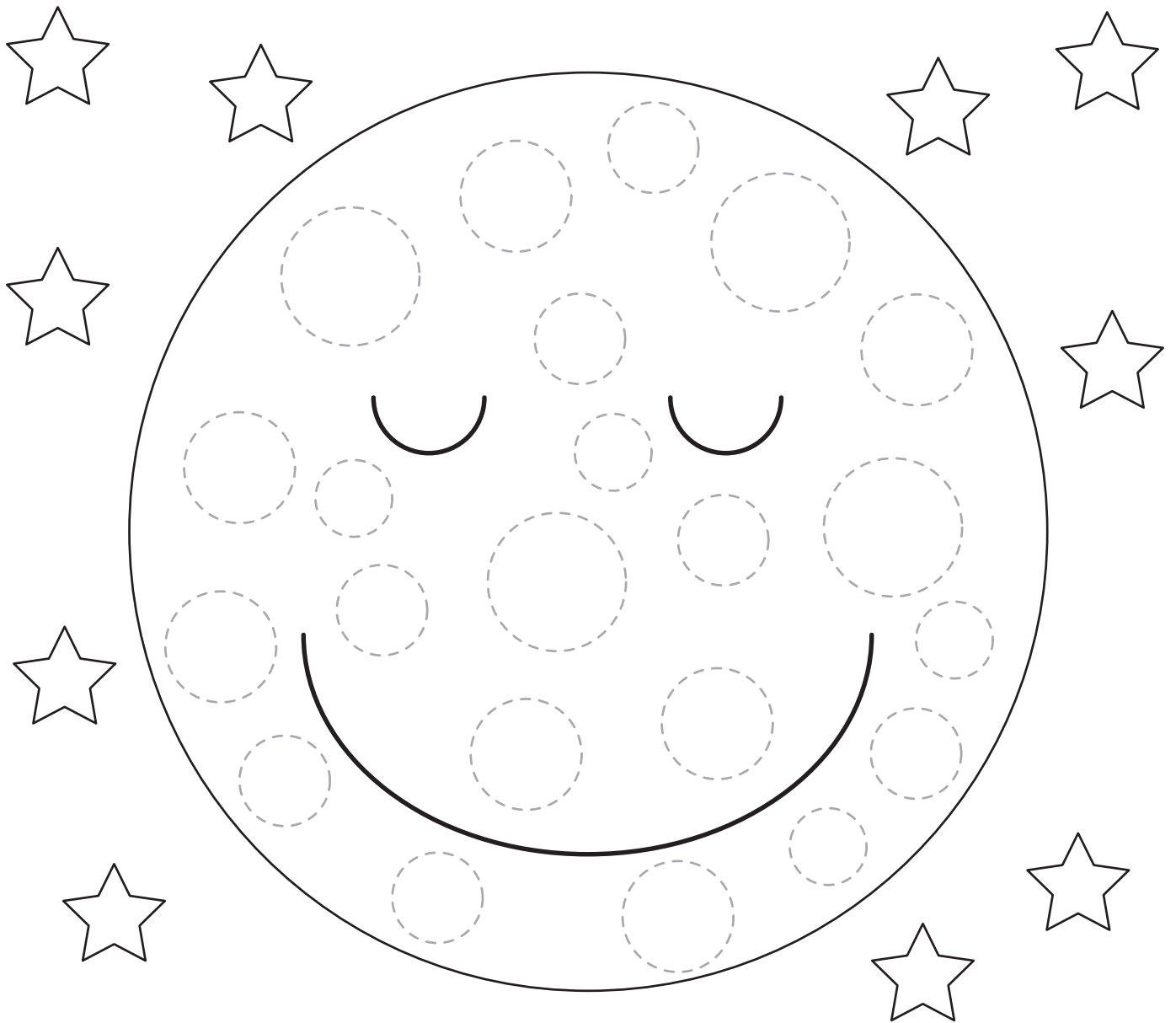
OBTÁHNI A VYBARVI OBRÁZEK

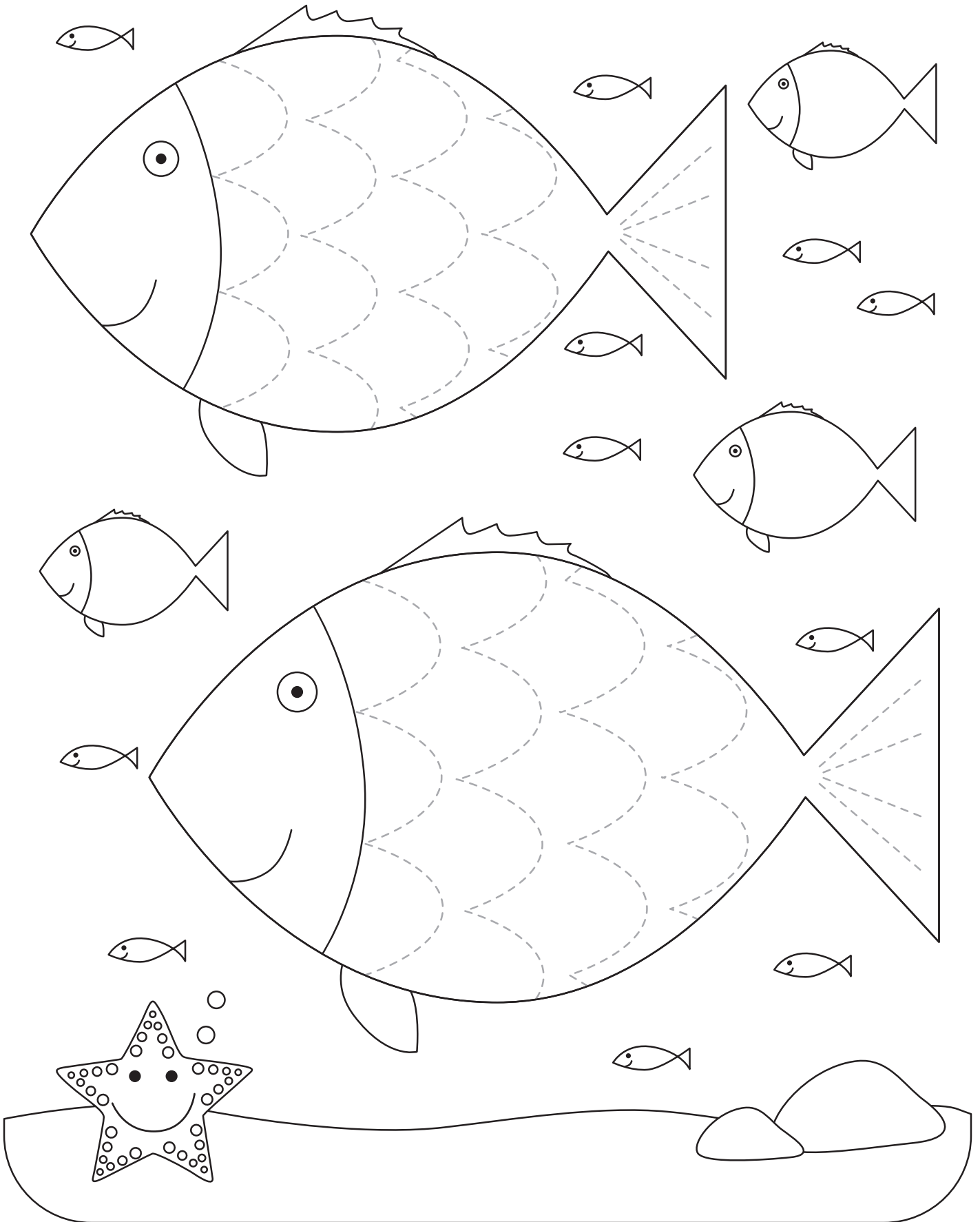


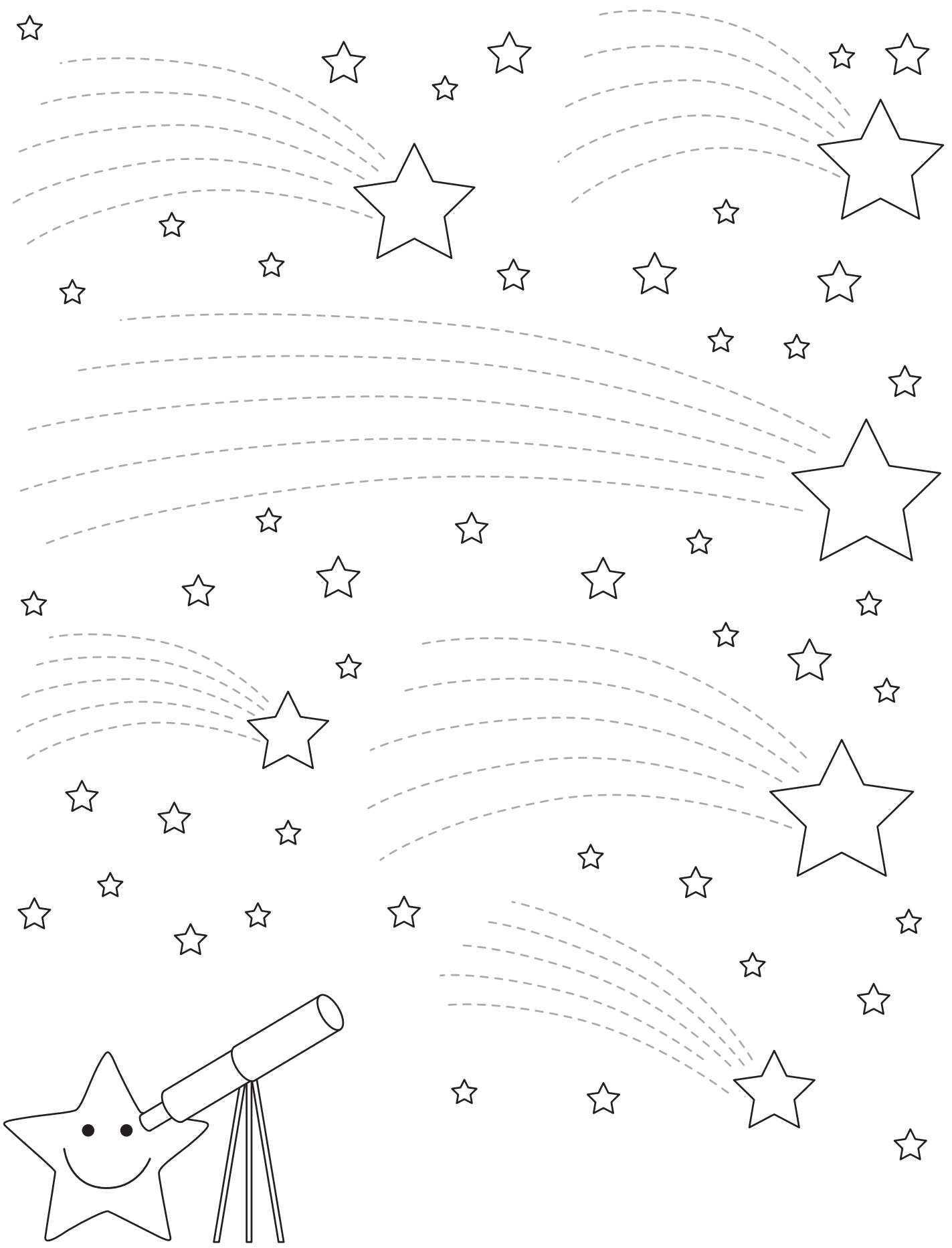


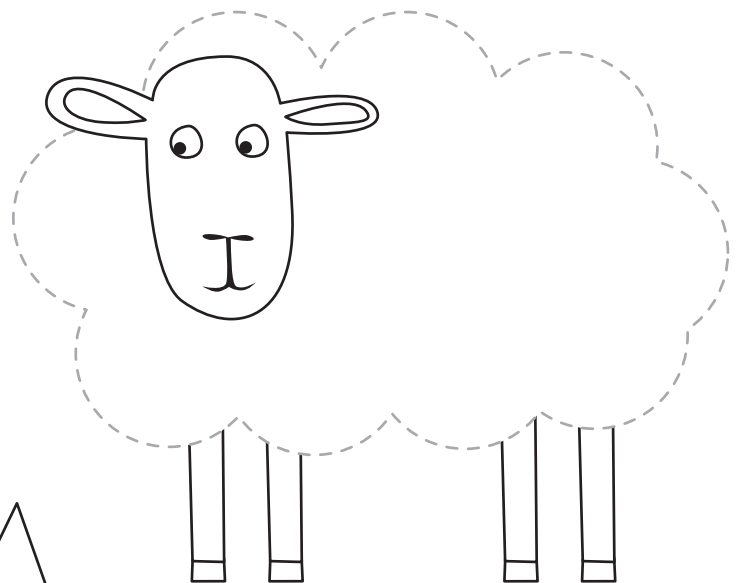
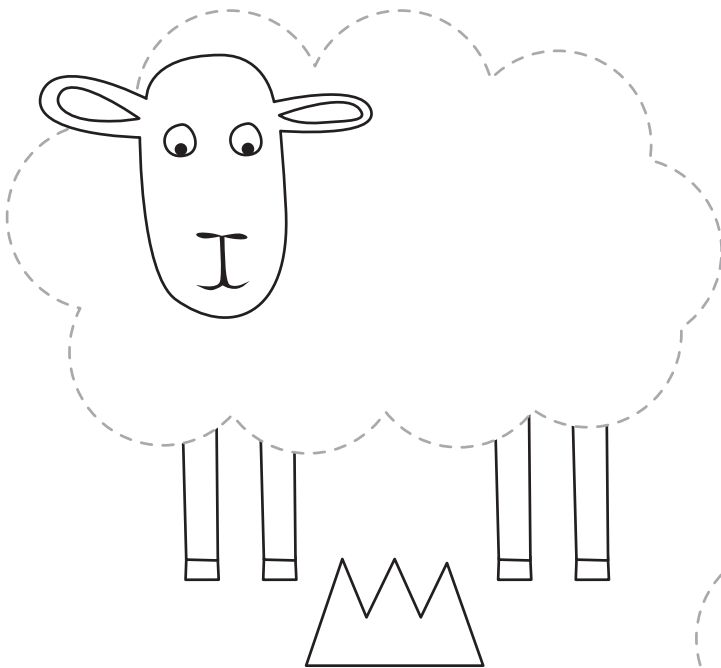
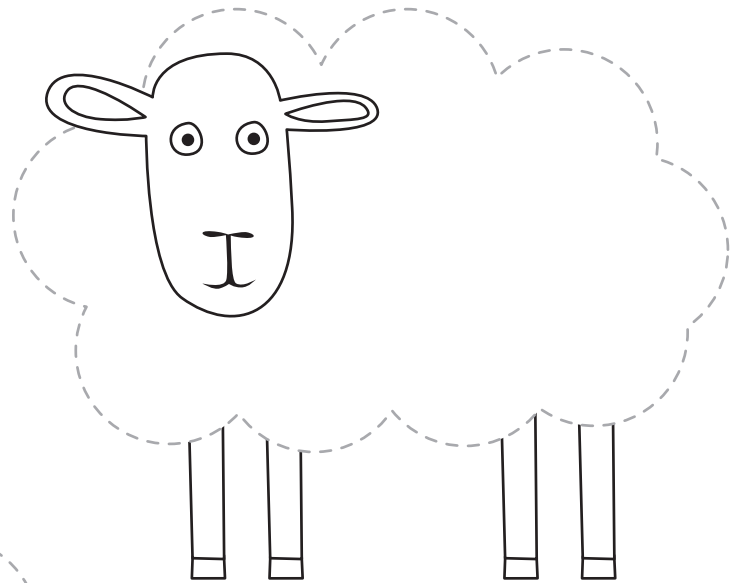
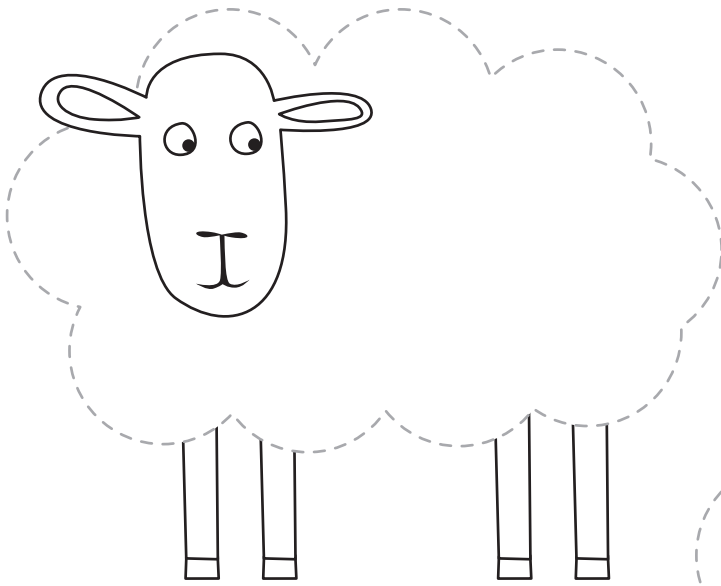


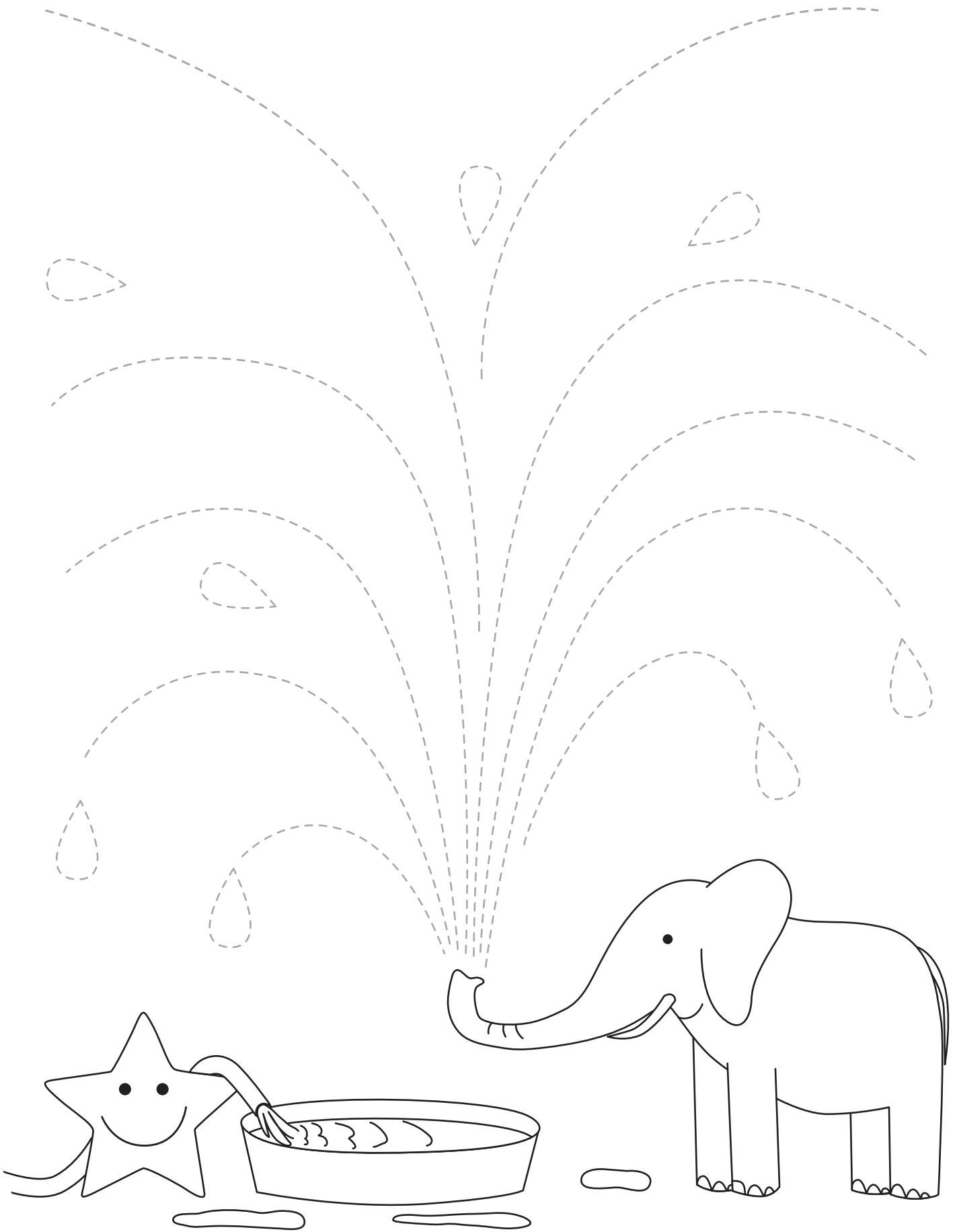


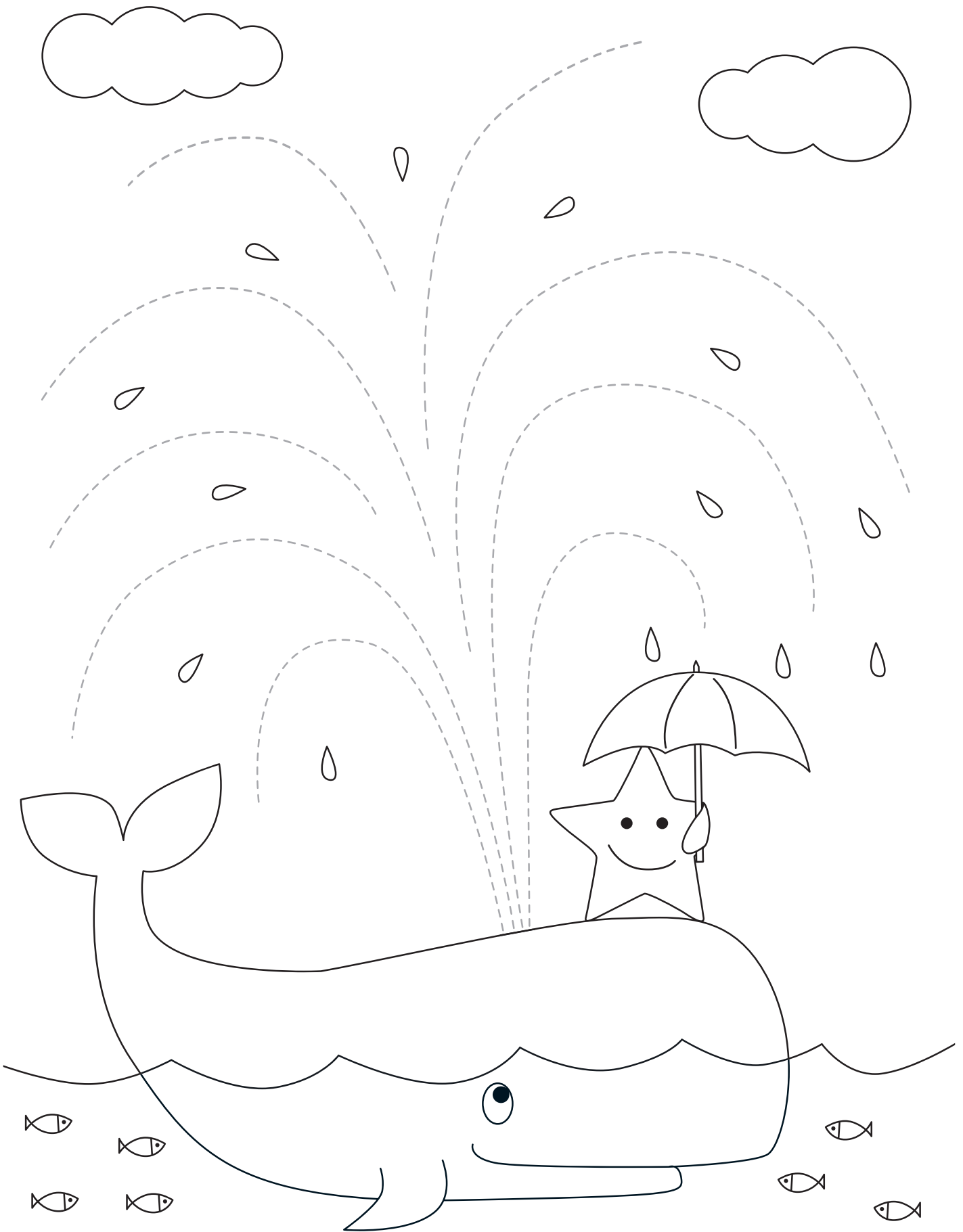


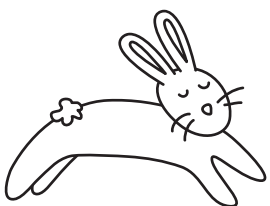
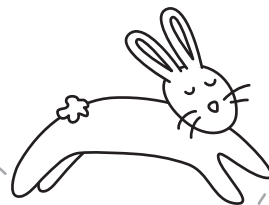
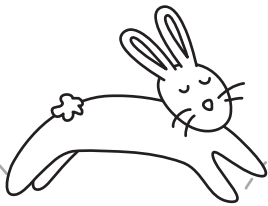
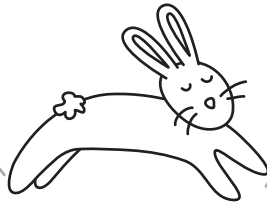
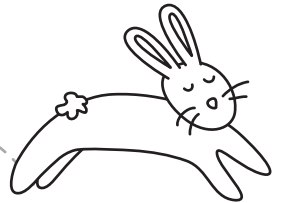
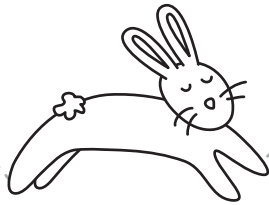
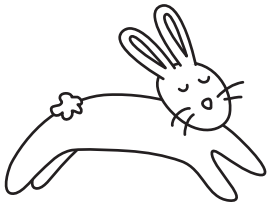














The image contains a large tracing exercise. At the bottom, there are five square cakes with polka dots on a counter. From each cake, a dotted line rises and forms a series of loops and curves. To the right of the cakes is a smiling star character wearing a chef's hat and holding a spoon.



This page contains six large dashed-line spirals for tracing. Each spiral starts with a central flower and winds outwards. The spirals are arranged in three rows. The top row has two spirals, the middle row has one, and the bottom row has two. Between the spirals are various illustrations: bees, tulips, and different types of flowers. At the bottom center, there is a large, smiling star character holding a bouquet of flowers.

