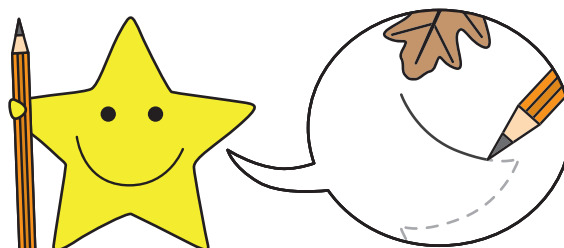
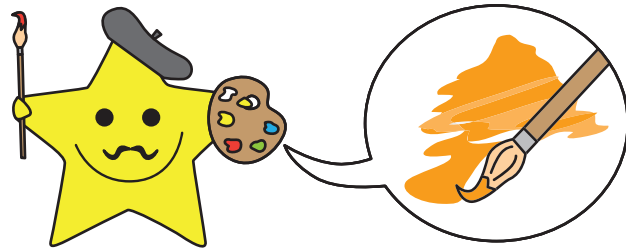
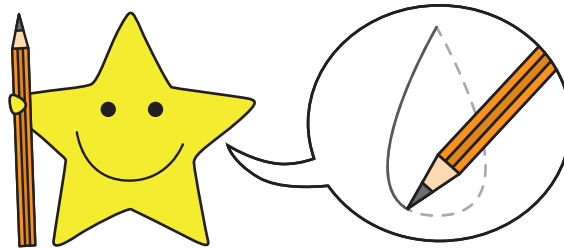
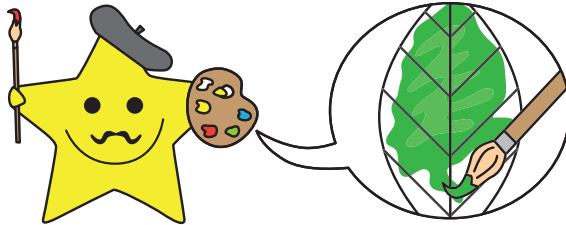
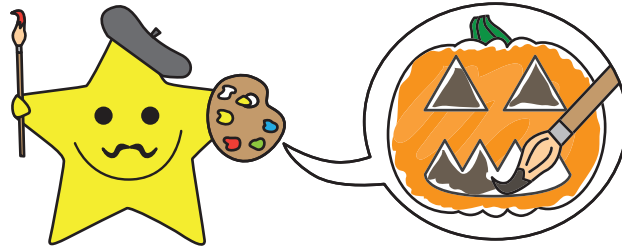
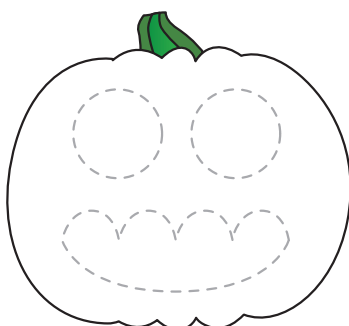
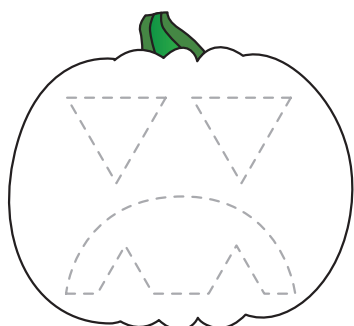
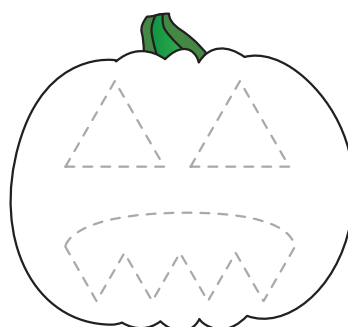
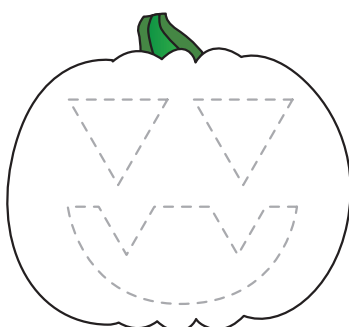
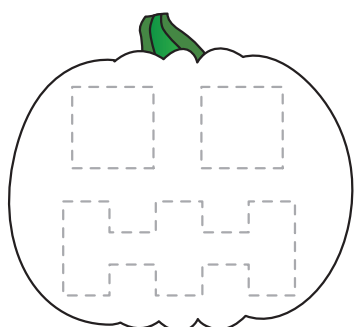
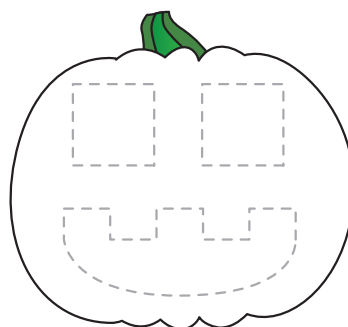
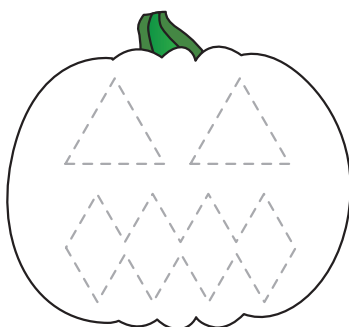
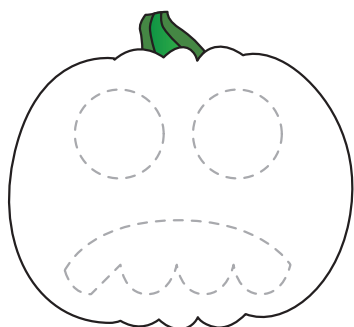
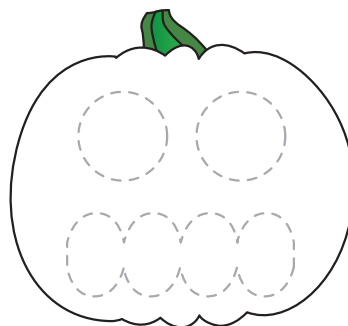
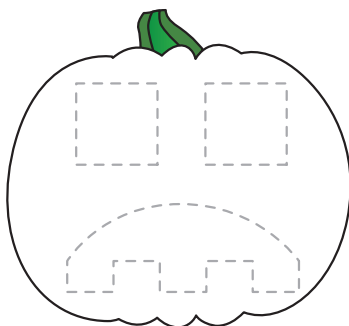
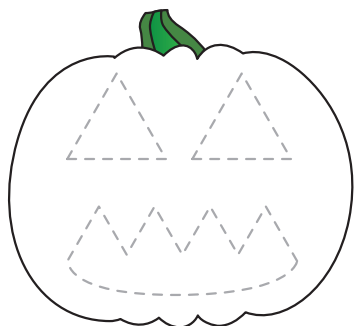
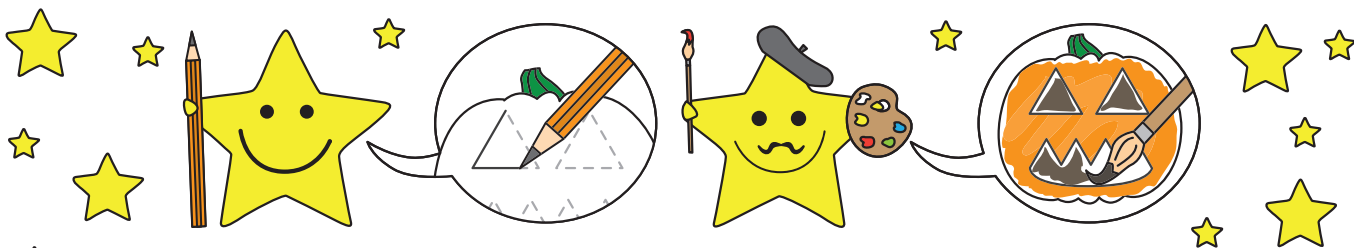
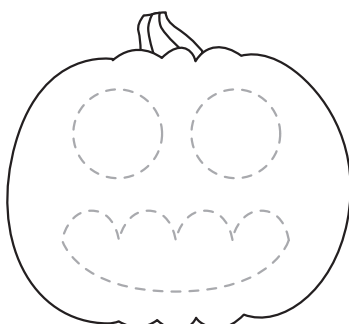
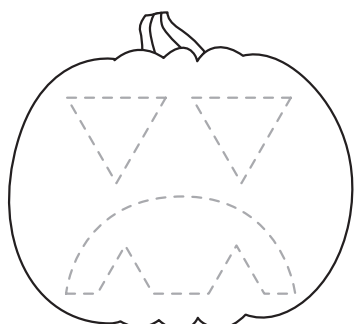
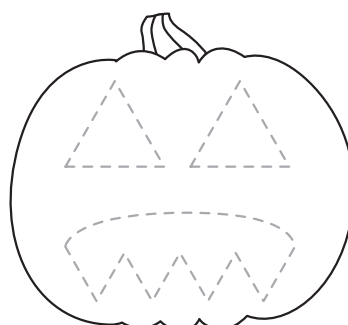
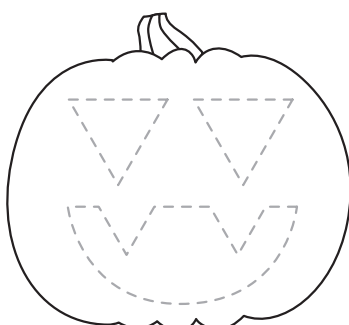
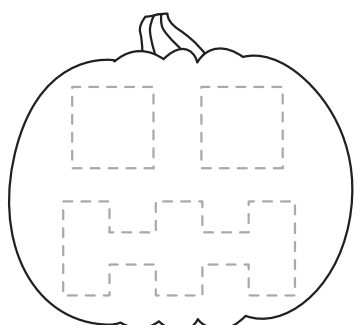
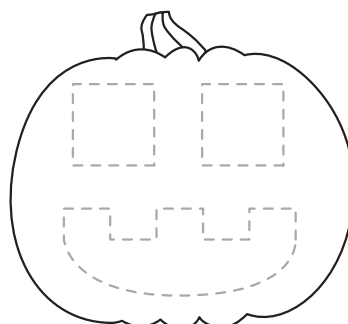
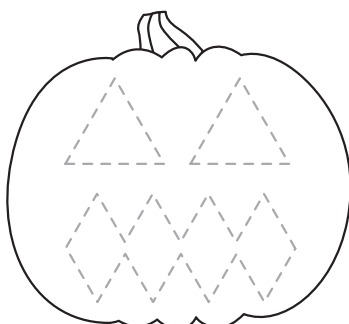
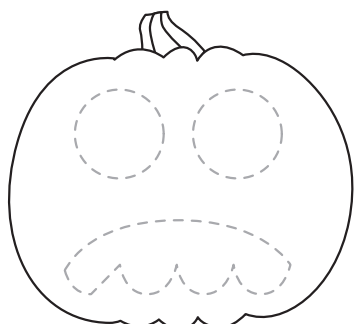
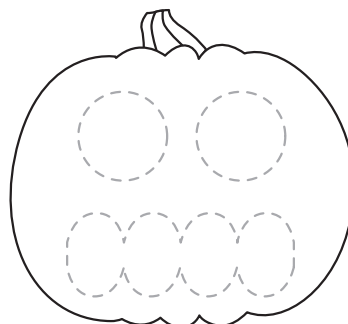
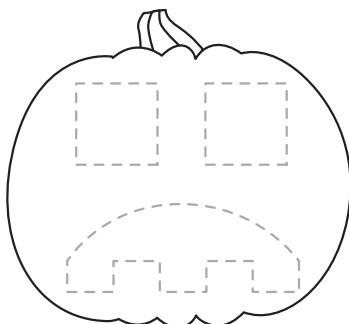
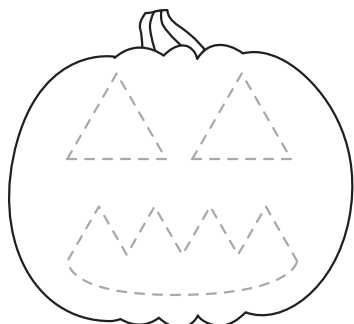
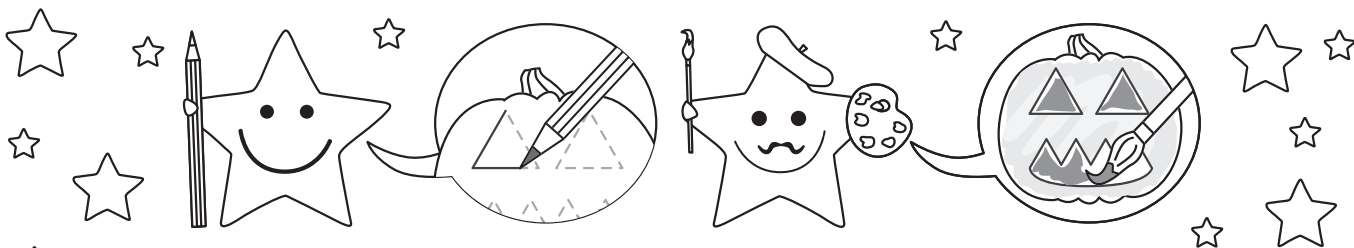


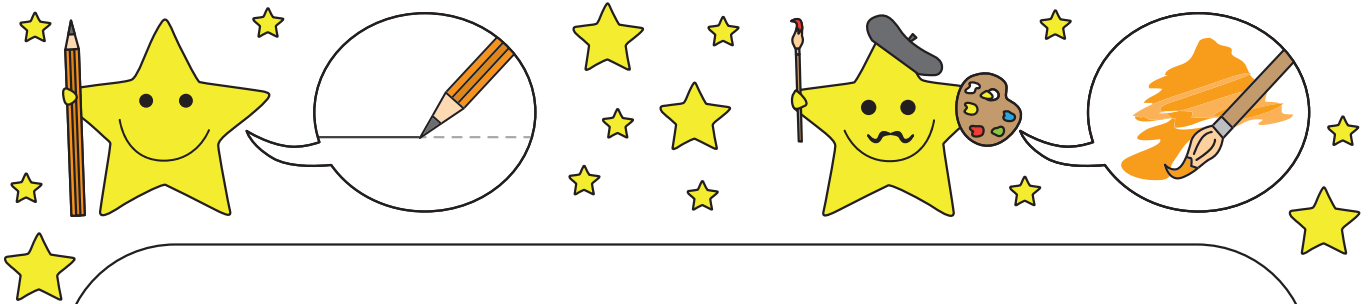


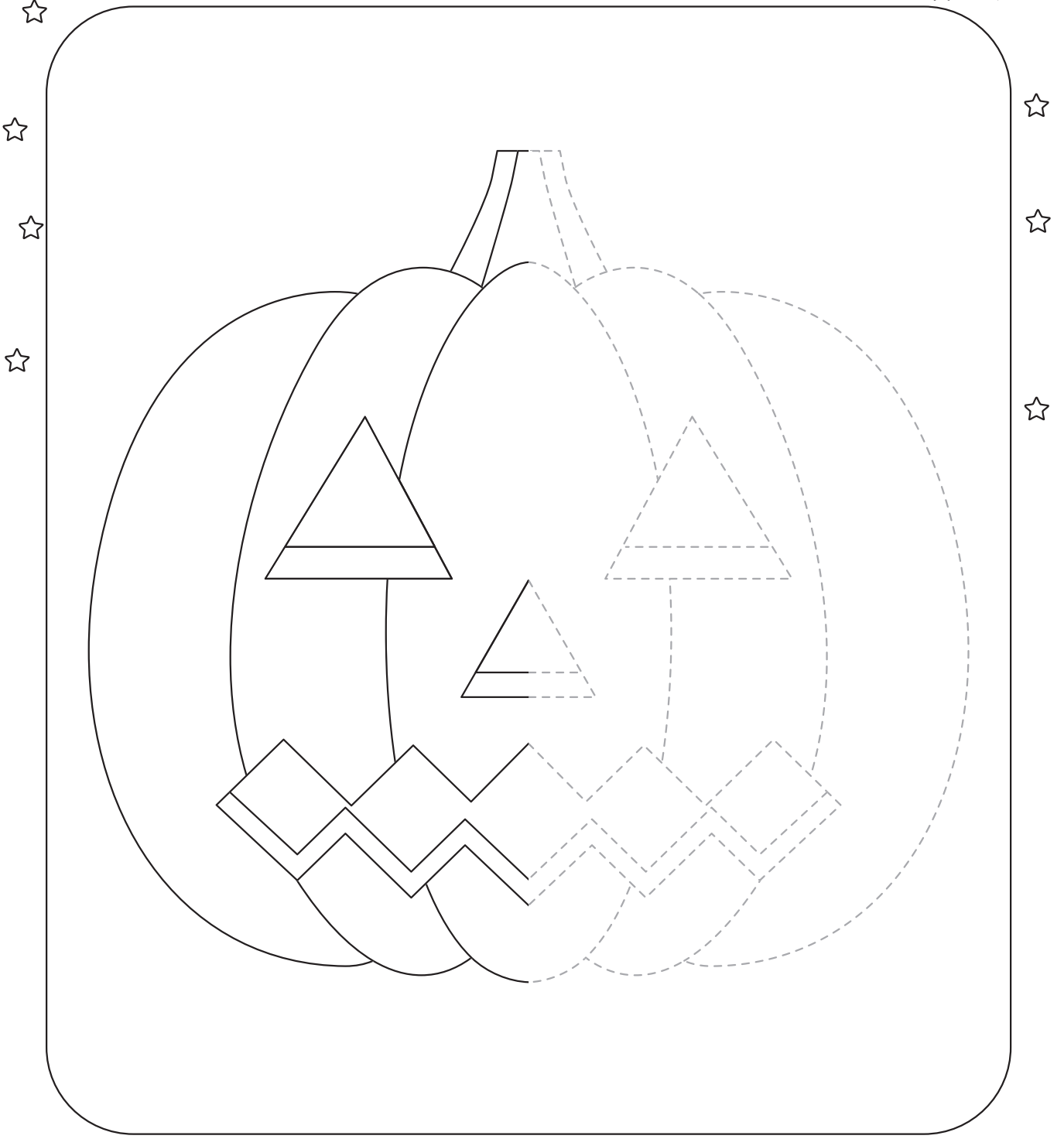
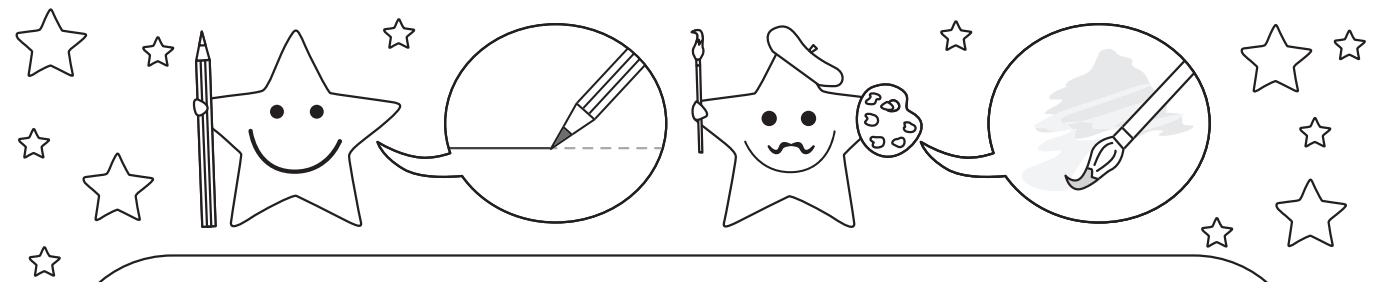
# PODZIMNÍ PRACOVNÍ LISTY: OBTÁHNI A VYBARVI OBRÁZKY

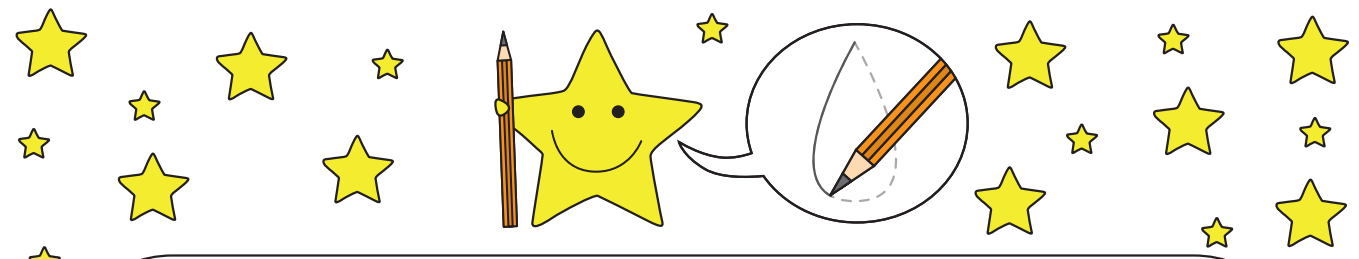


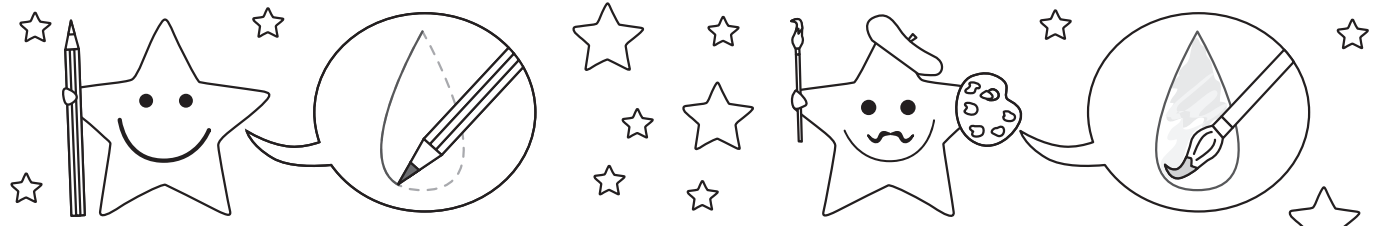




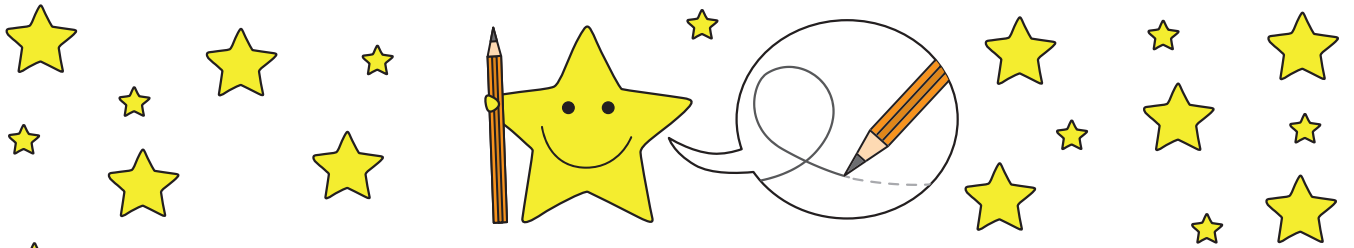








A large rounded rectangular area containing 20 dashed teardrop shapes for tracing. The shapes vary in size and are scattered throughout the space. At the bottom right corner of this area is a smiling star character holding an open umbrella.

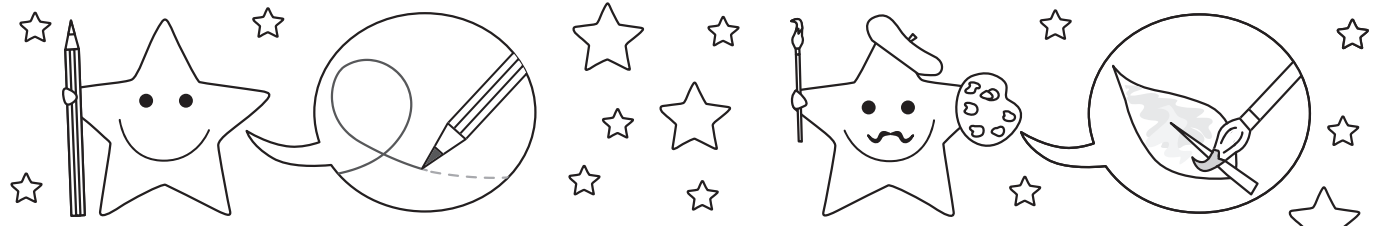


Tracing practice area with five rows of dashed lines and autumn-themed illustrations.

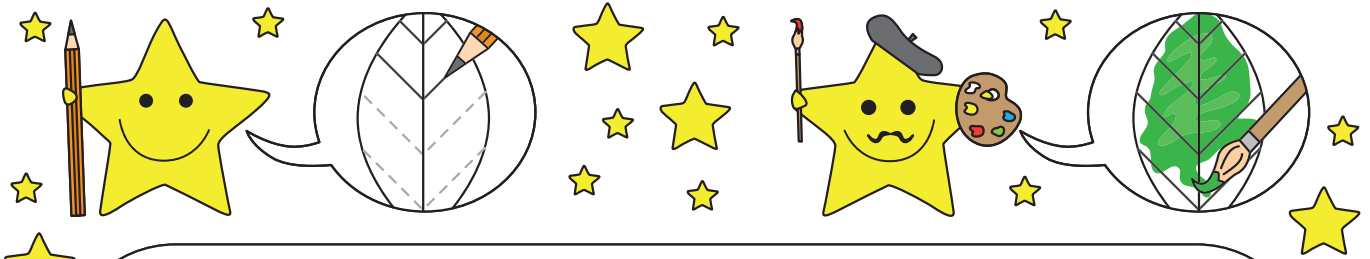
- Row 1: A wavy dashed line. Illustration of a brown leaf.
- Row 2: A series of five overlapping circular loops. Illustration of a brown leaf.
- Row 3: A wavy dashed line. Illustration of a yellow leaf.
- Row 4: A series of five overlapping circular loops. Illustration of a brown leaf.
- Row 5: A wavy dashed line. Illustration of a yellow leaf.

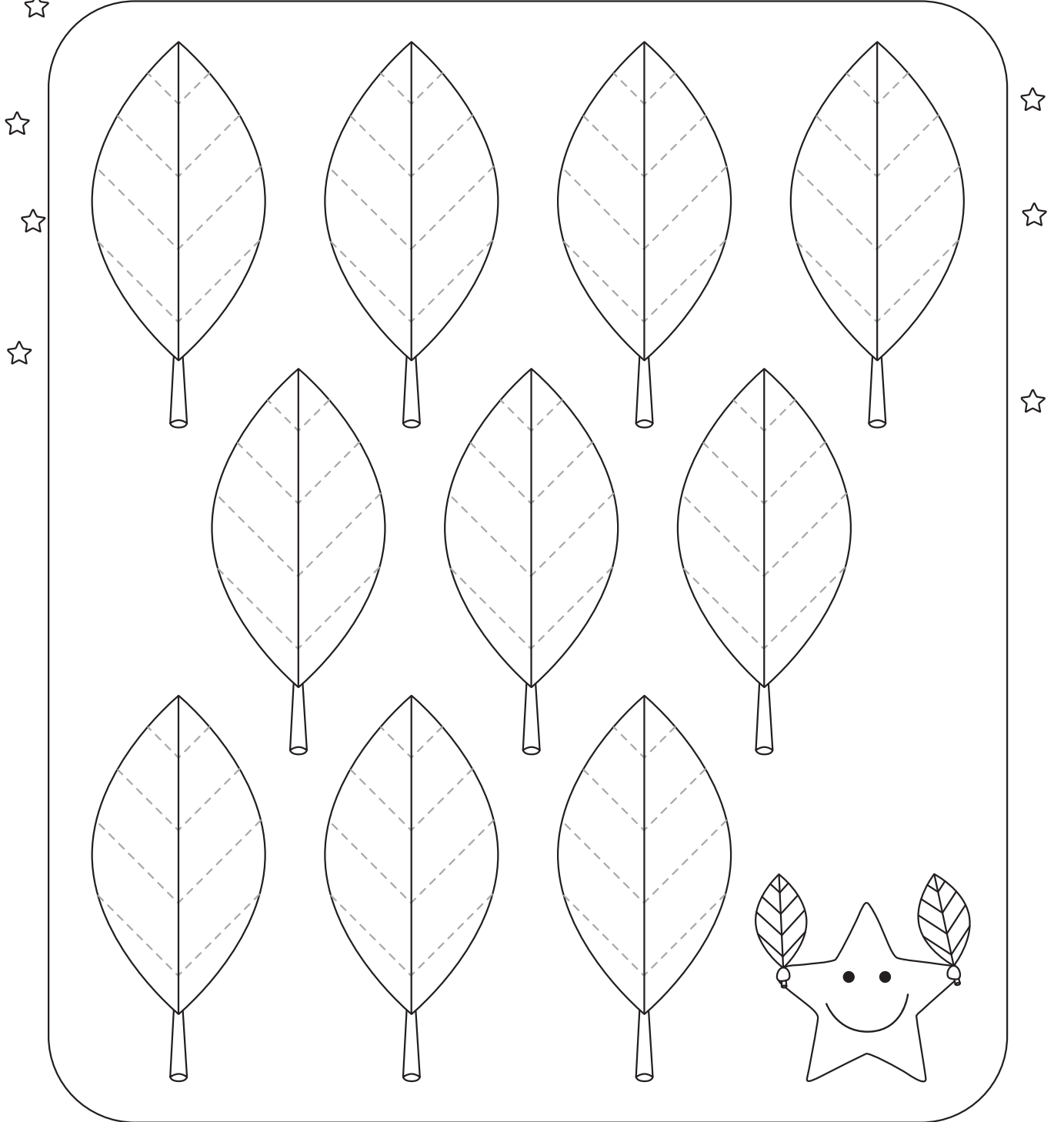
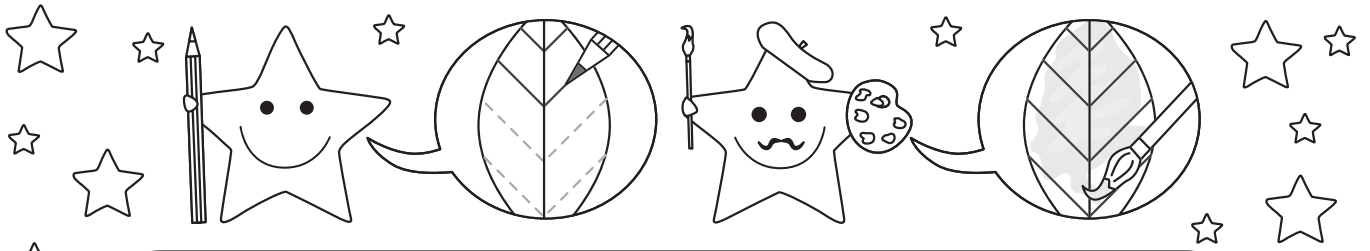
Bottom illustration: A yellow star holding a broom, a brown cup, and several brown leaves.

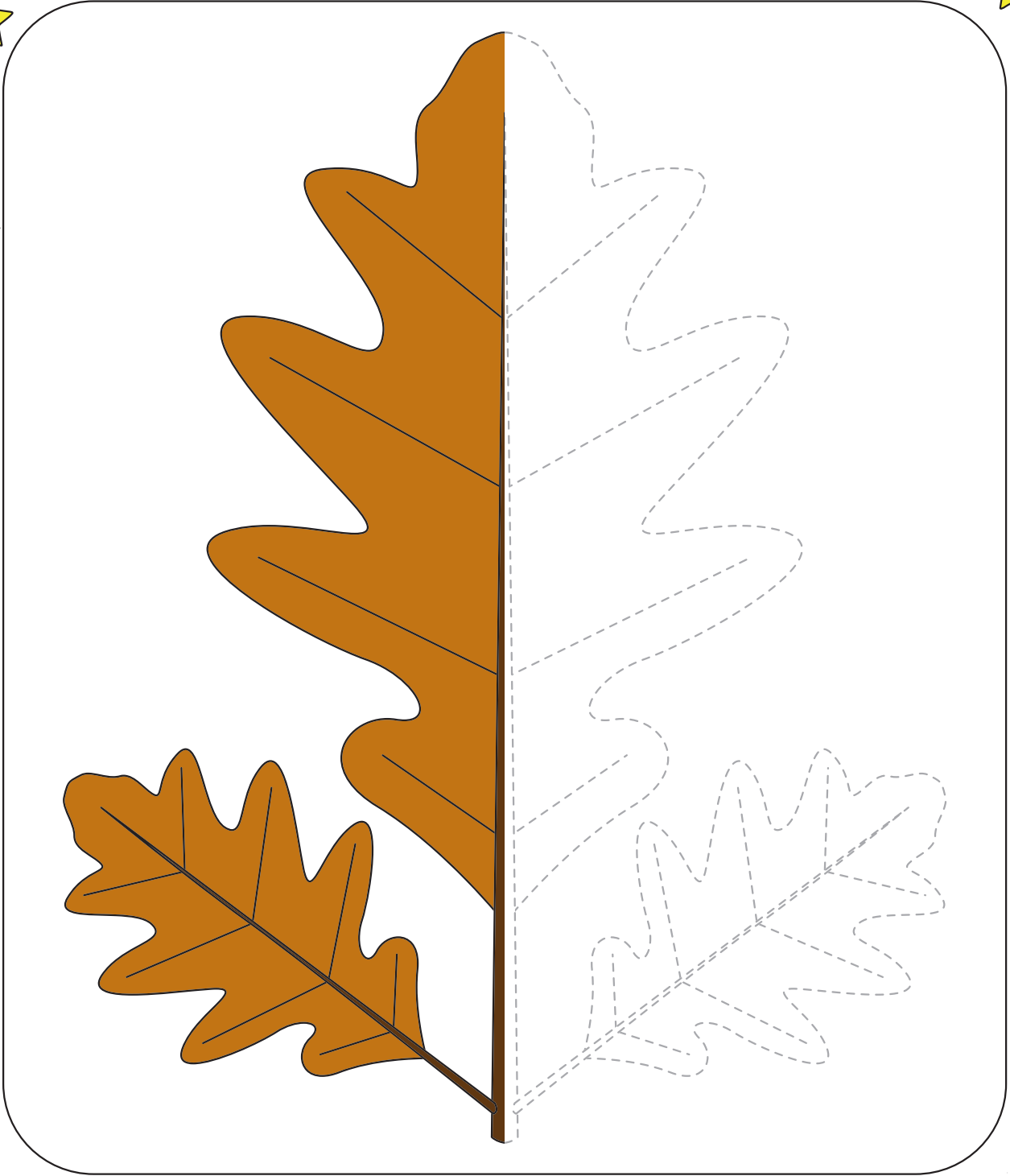


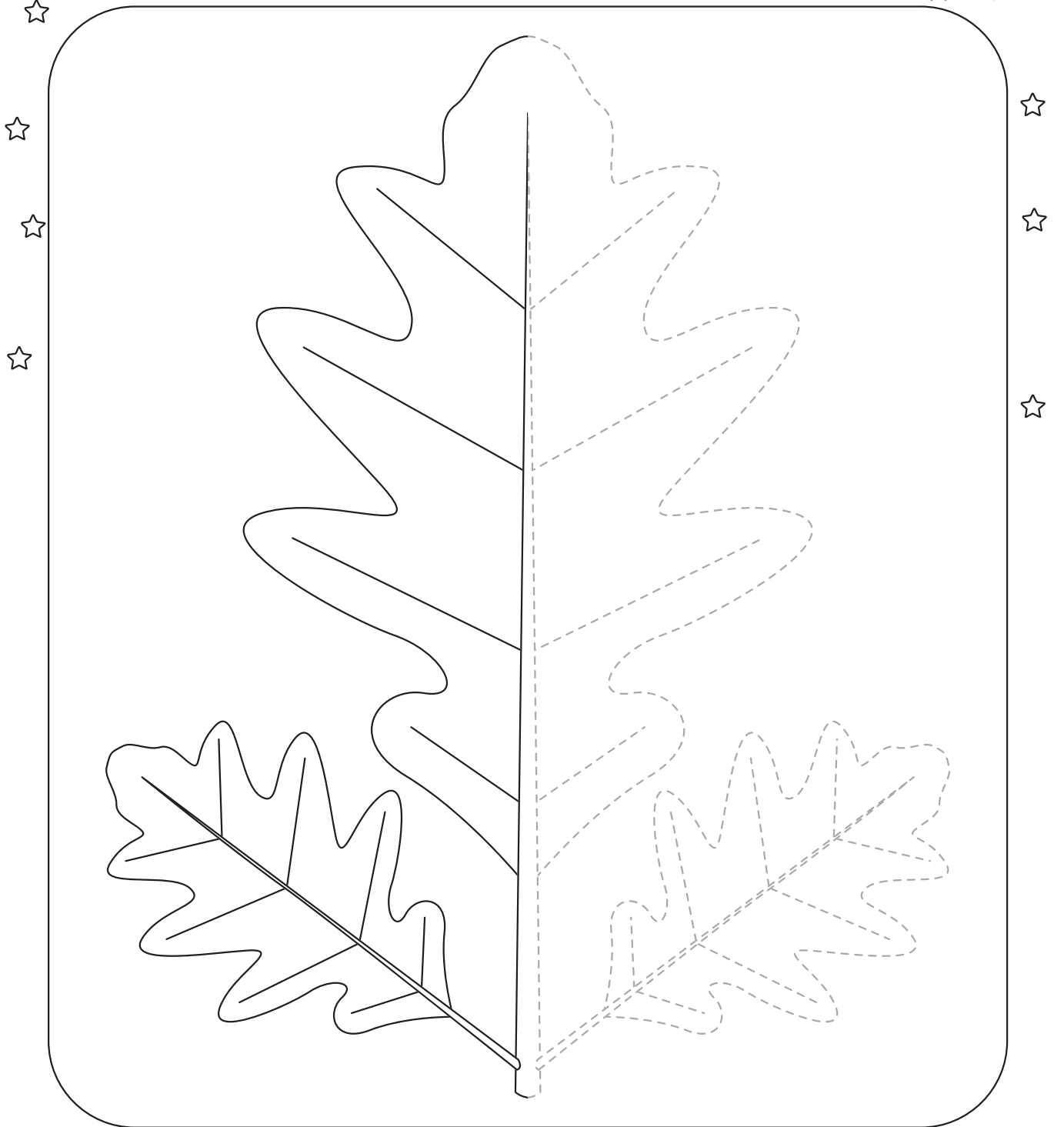
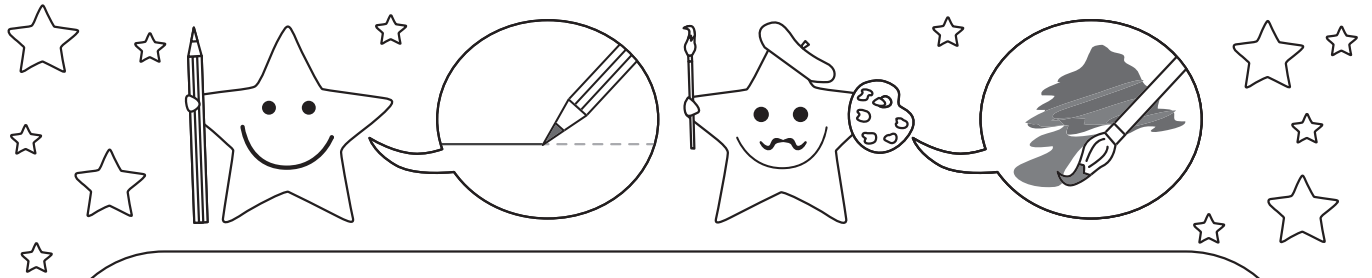


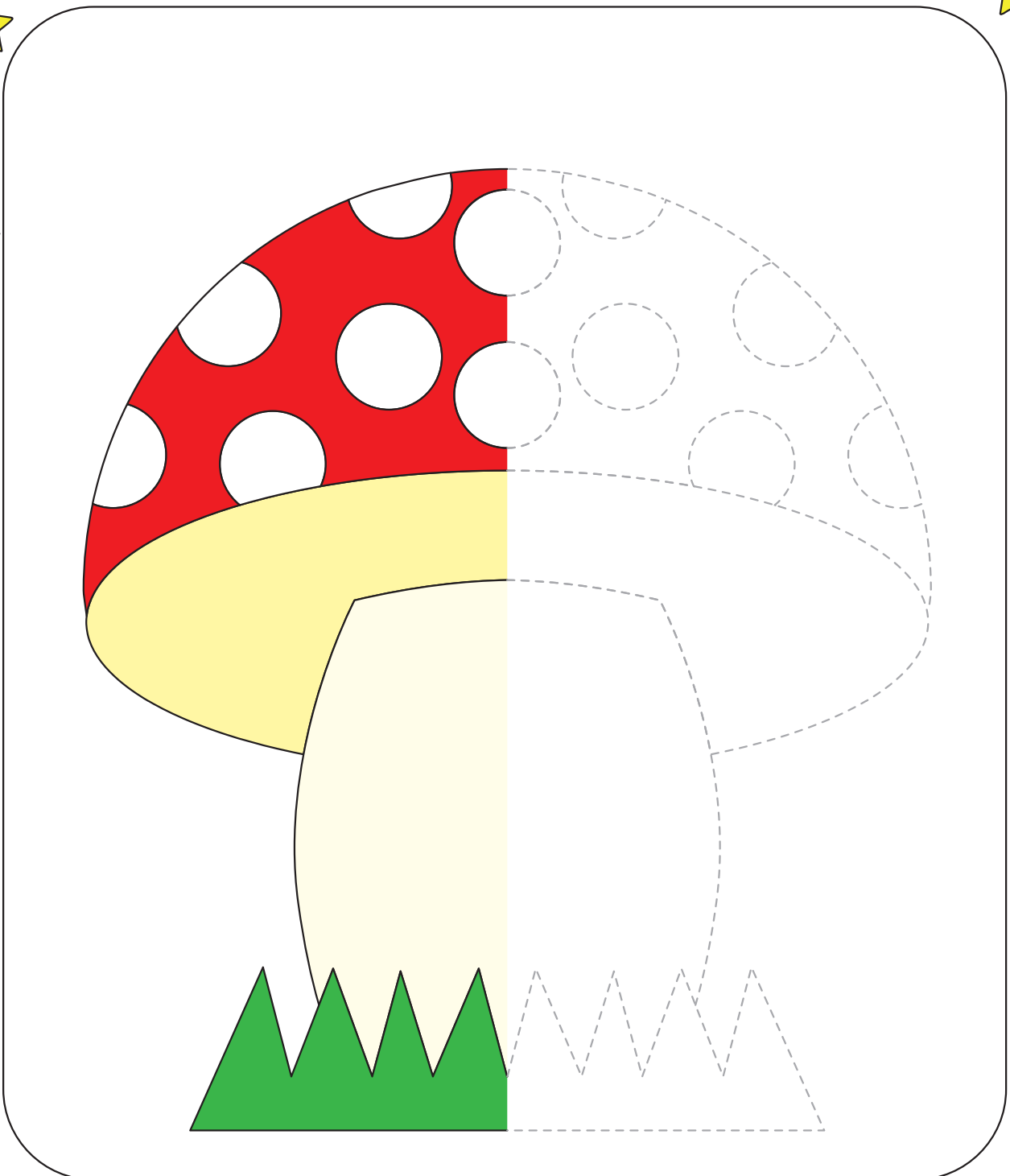
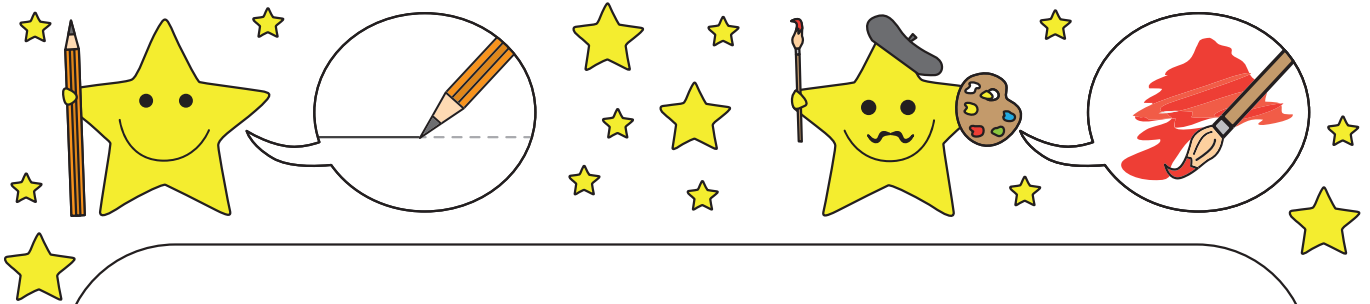
Tracing practice area with four rows of dashed lines. Each row includes a wavy line, a series of overlapping circles, and a leaf illustration. The bottom row features a star character holding a paintbrush, a paint cup, and a brush.

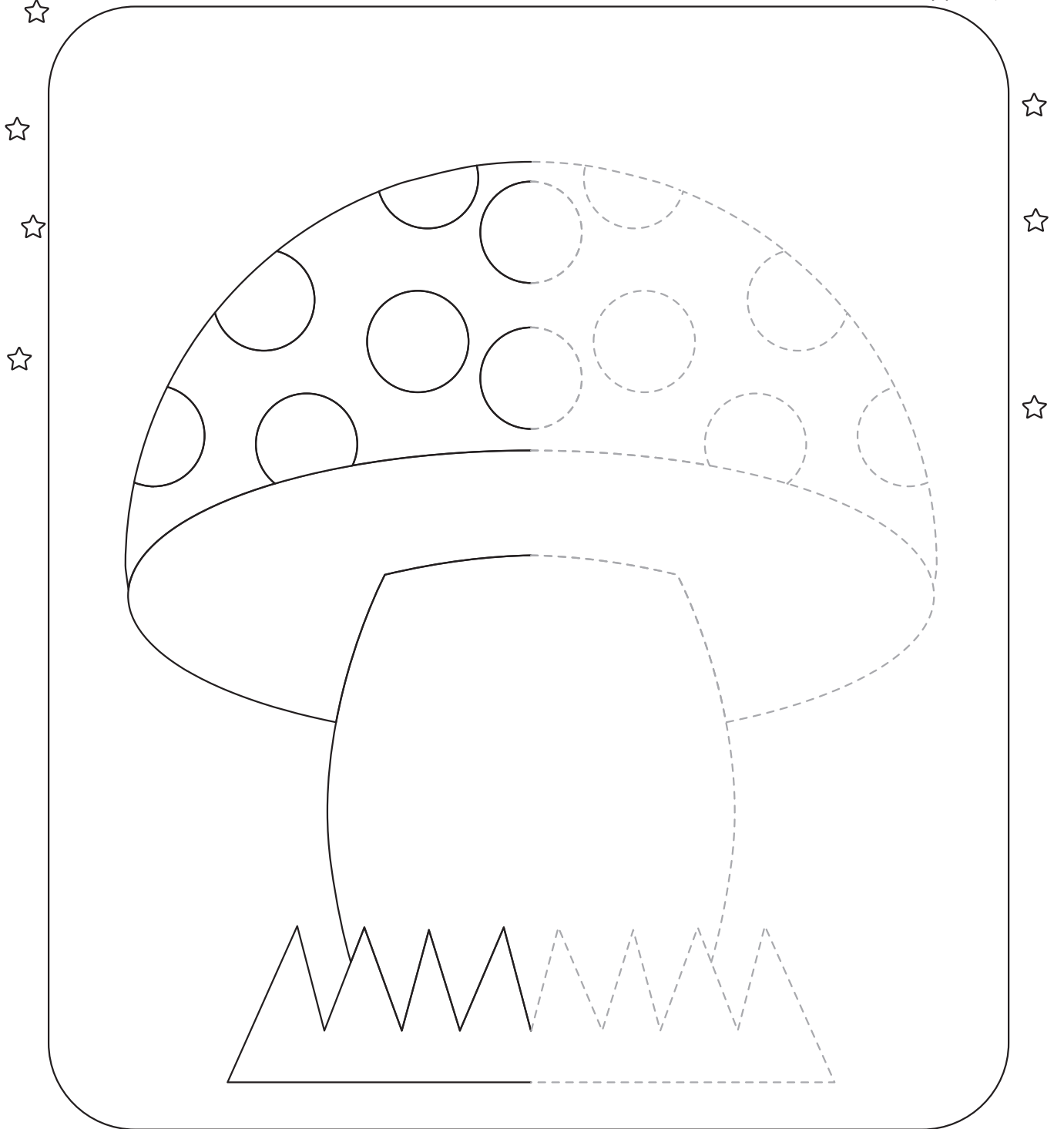
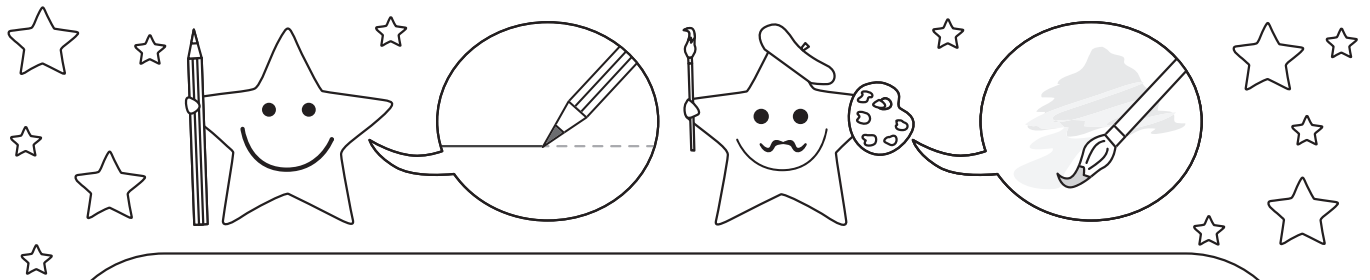


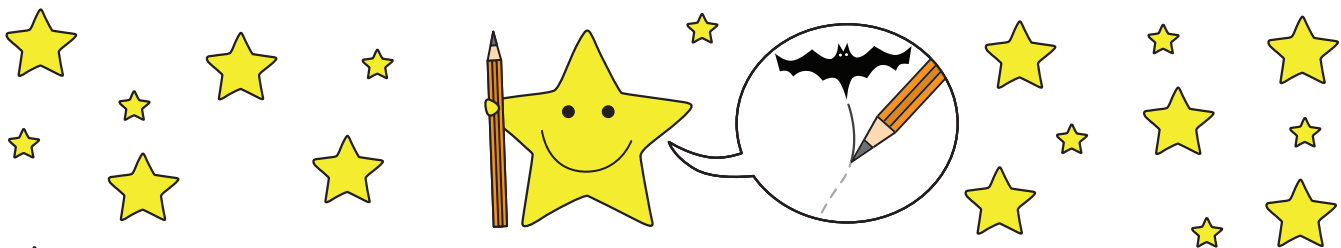




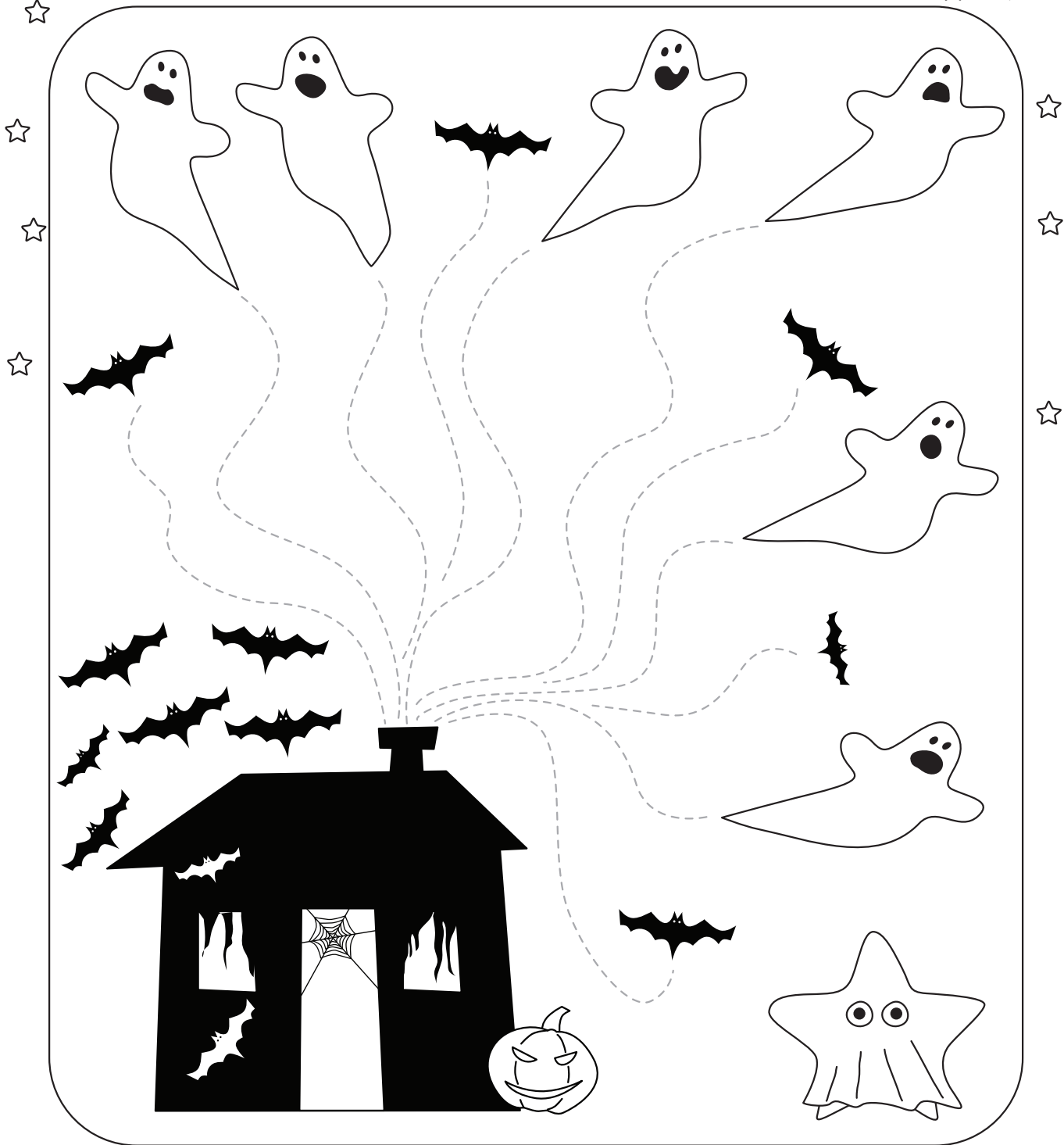
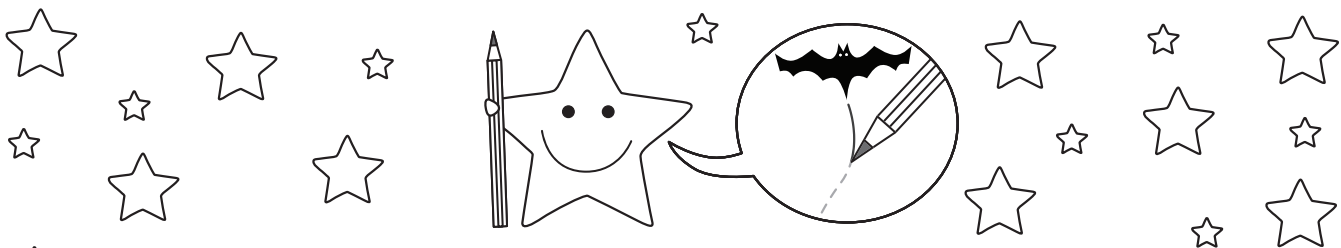


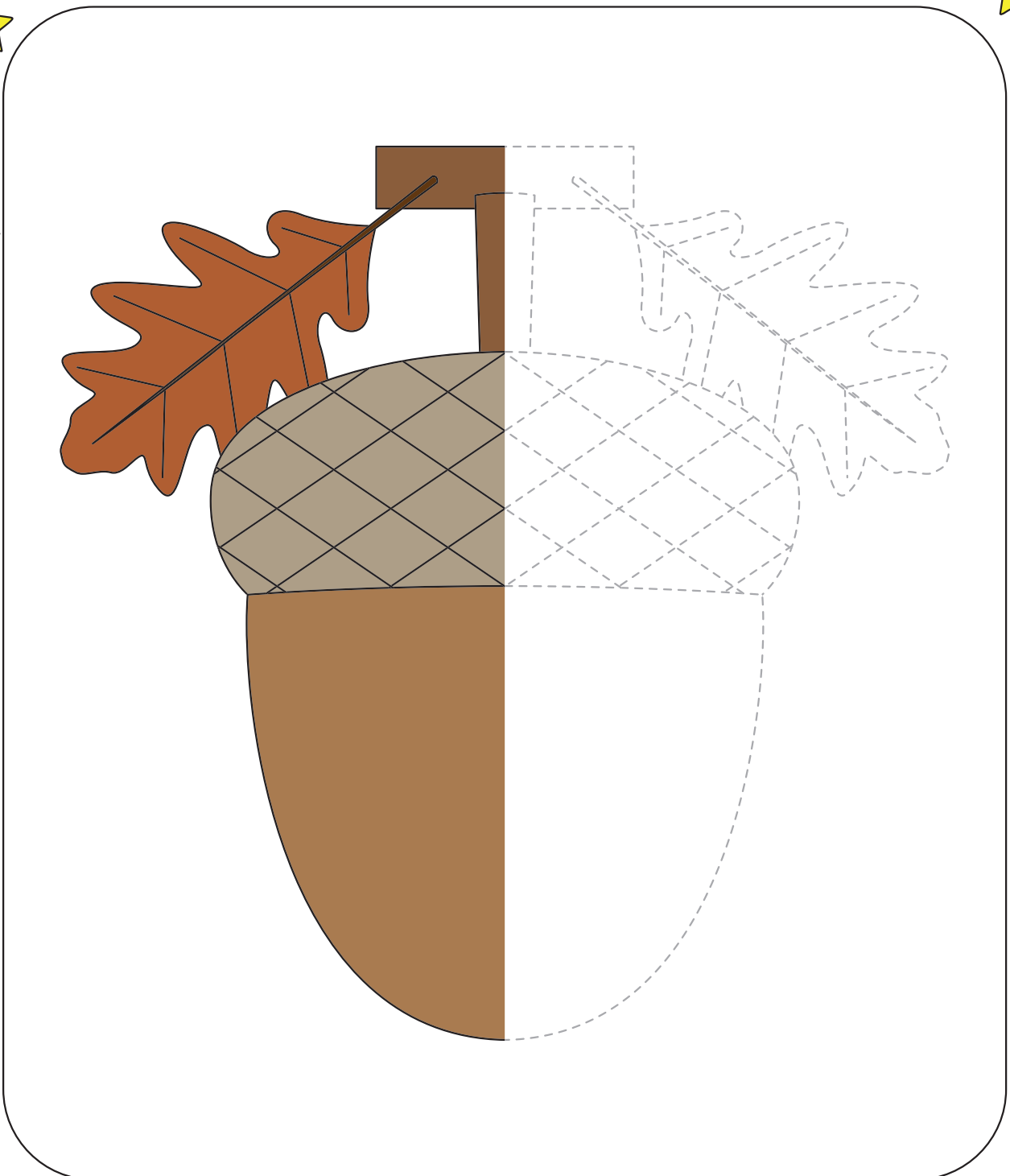
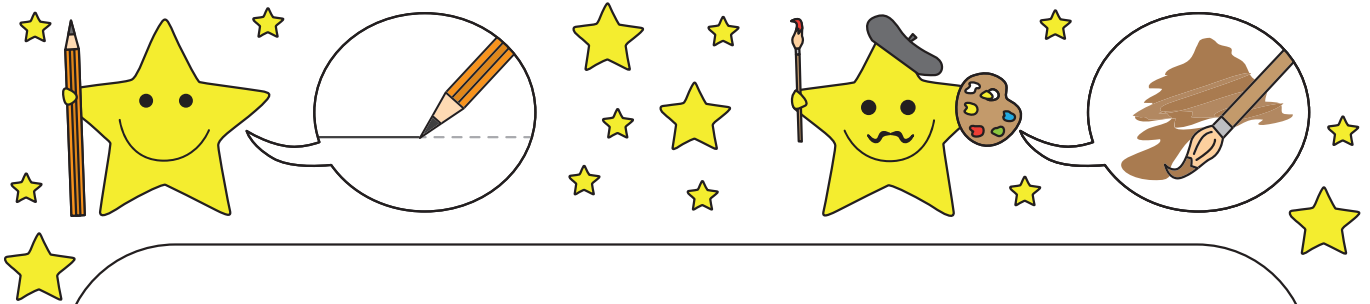


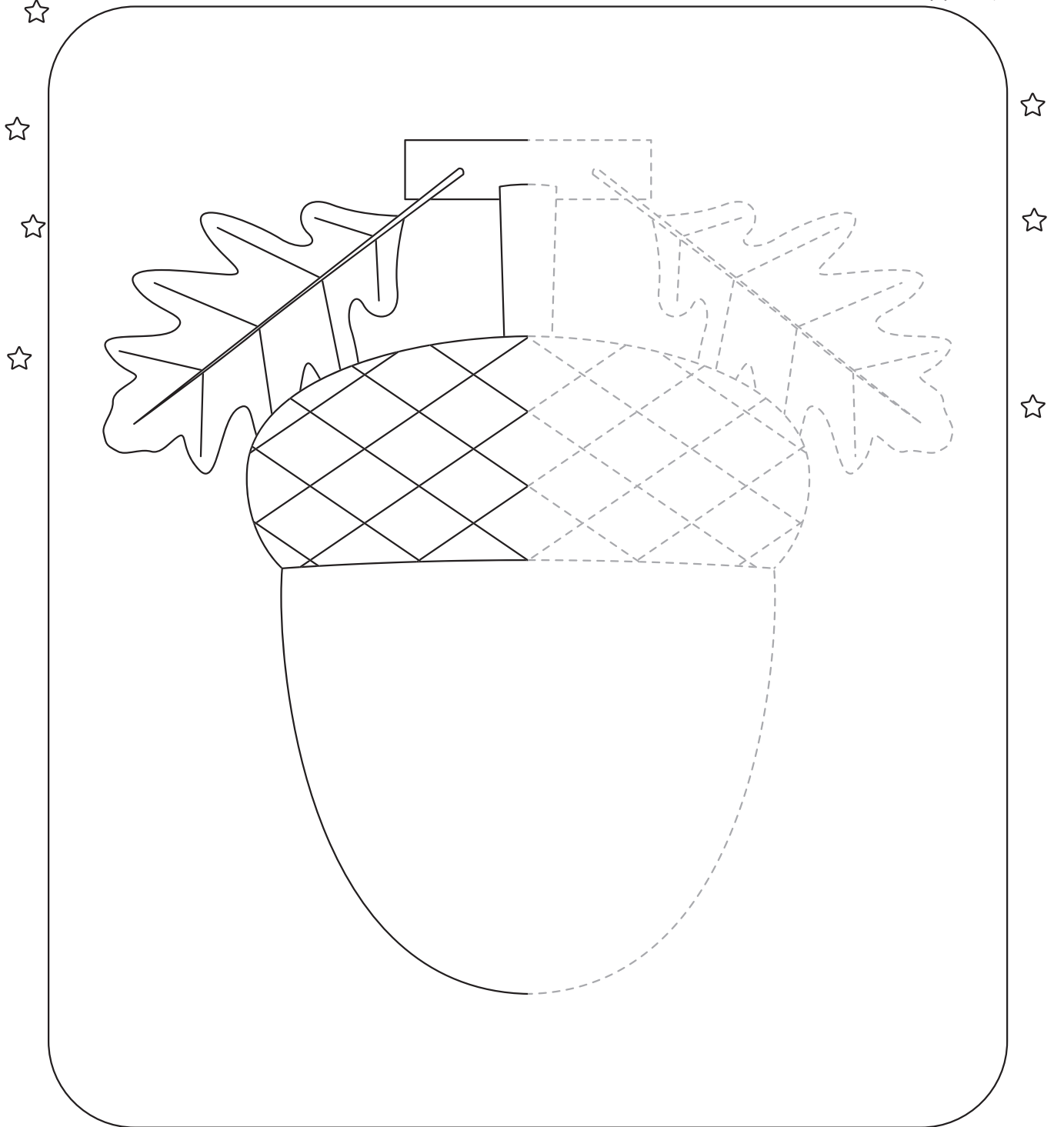
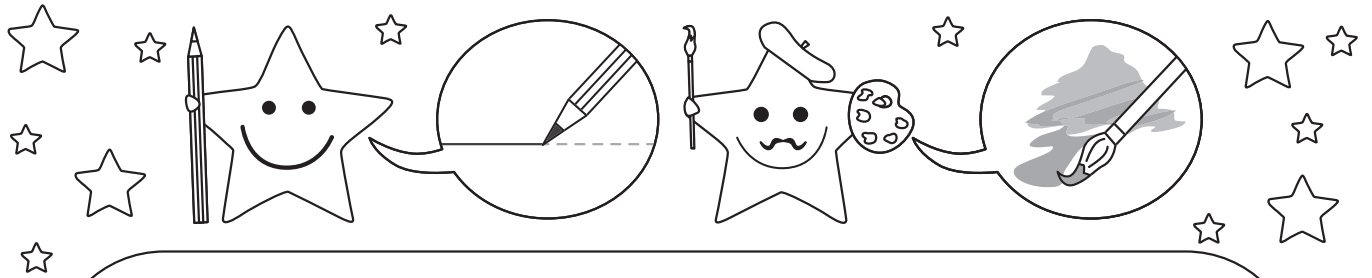




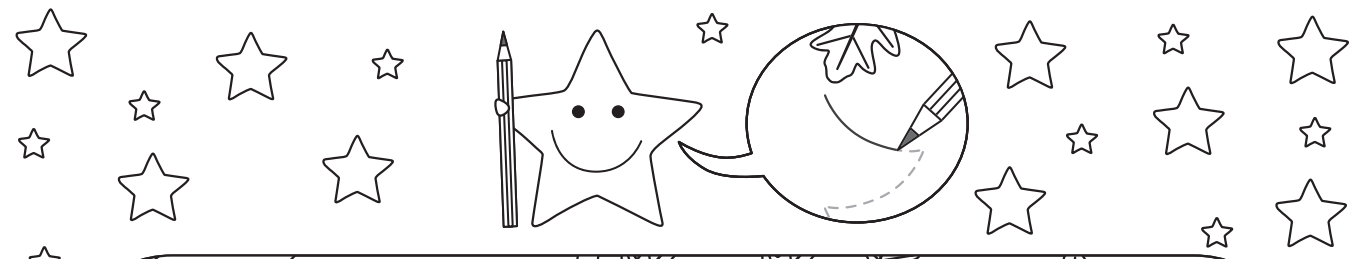












The main activity area is a large rounded rectangle. At the top, it shows a landscape with trees and a path. Below this, there are four vertical columns for tracing. Each column starts with a solid line drawing of an oak leaf or acorn at the top. A vertical dashed line runs down the center of each column. On either side of this dashed line, there are several curved dashed lines that form a series of 'C' shapes, intended for tracing practice. At the bottom right of this area, there is a small basket containing an acorn and a smiling star character.